



ADVANCED CELL DIAGNOSTICS

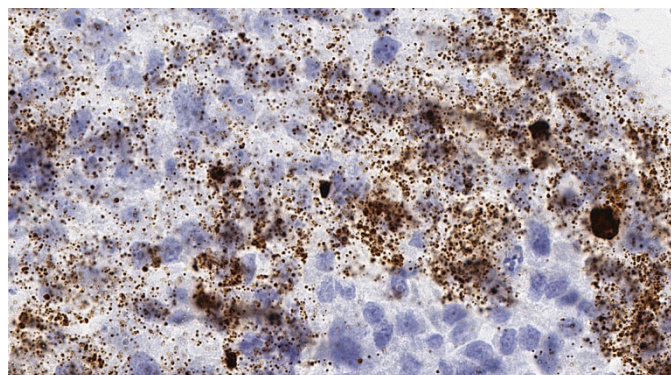
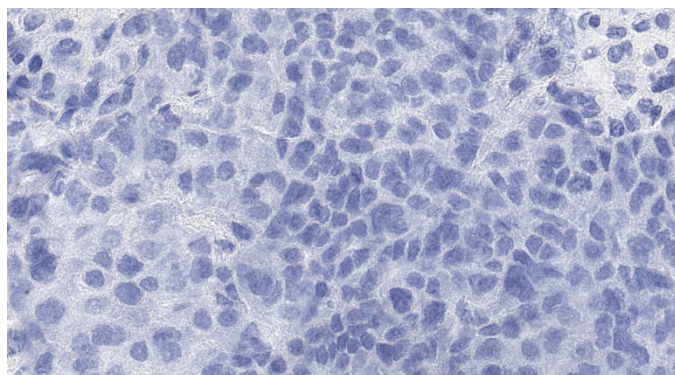
TARGET PROBE: HS-IL33

RNASCOPE® PROBE INFORMATION

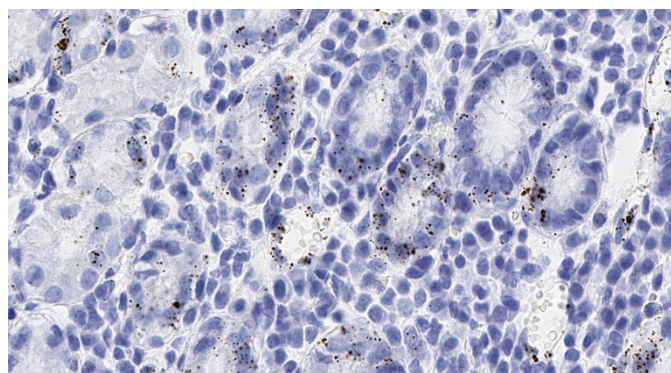
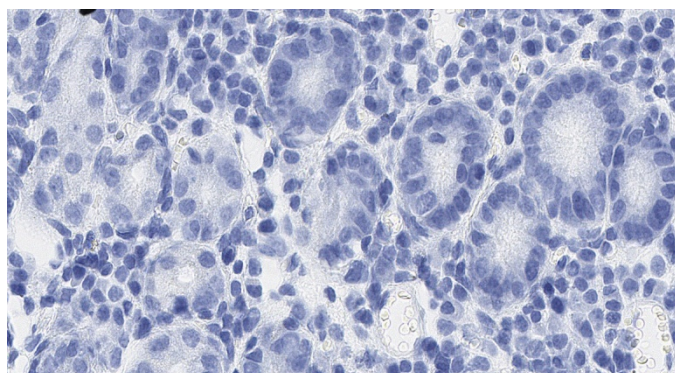
Catalog number:	400111 (Manual)*, 400116 (VS assay)*, 400117 (LS assay)* 400119 (2.5 VS assay)*, 400118 (2.5 LS assay)*
Species:	Homo sapiens
Target Gene:	IL33
Alternate names:	DVS27; IL1F11; NF-HEV; NFEHEV; C9orf26
Entrez Gene ID:	90865
Accession#:	NM_033439.3
Unigene:	Hs.731660
Target Sequence:	Homo sapiens interleukin 33 (IL33), transcript variant 1, mRNA
Probe Region:	46 - 1235
ZZ pair number:	20

* Target region is the same across manual and automation

PROBE DATA



RNAScope® Manual Brown Assay performed on FFPE liver cancer tissue under standard condition, using the dapB Negative Control probe (Left; Cat. No. 310043) and Hs-IL33 probe (Right; Cat. No. 400111), 40X



RNAScope® Manual Brown Assay performed on FFPE gastric cancer tissue under standard condition, using the dapB Negative Control probe (Left; Cat. No. 310043) and Hs-IL33 probe (Right; Cat. No. 400111), 40X

For more information regarding this target gene: <http://www.ncbi.nlm.nih.gov/gene/90865>

Note: ACD always recommends RNA quality verification using control probes, prior to running a target marker.
Expression pattern may vary from data shown here based on tissue preparation methods and/or associated sample biology.