



ADVANCED CELL DIAGNOSTICS

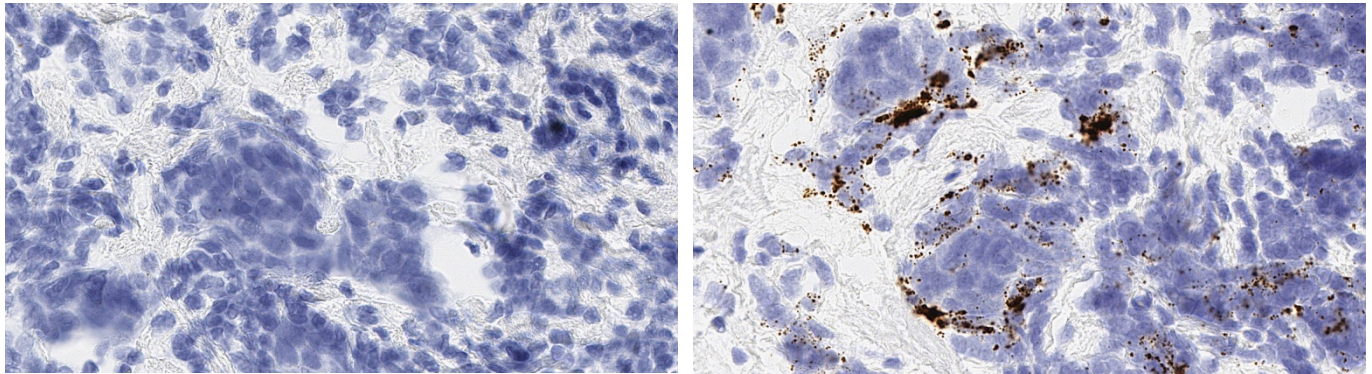
TARGET PROBE: HS-CXCL9

RNASCOPE® PROBE INFORMATION

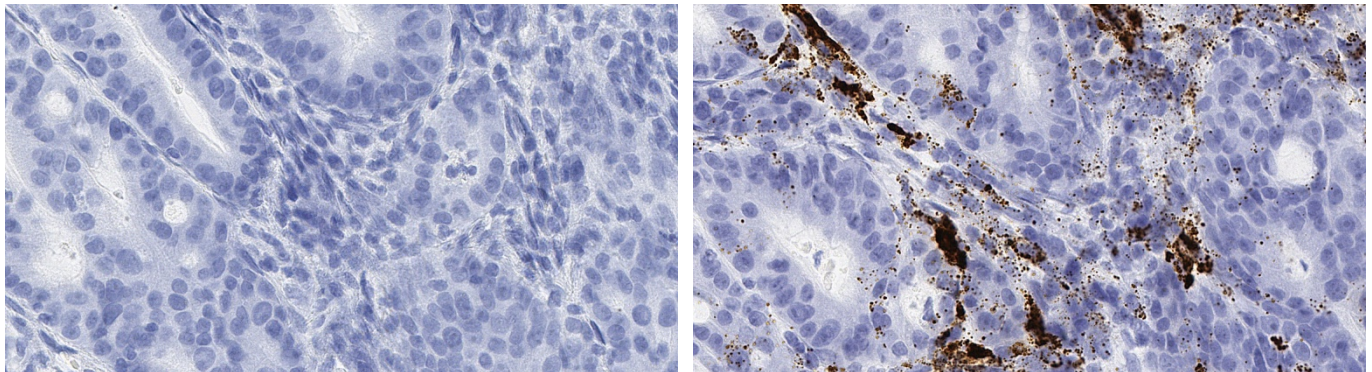
Catalog number:	440161 (Manual)*, 440166 (VS assay)*, 440167 (LS assay)* 440169 (2.5 VS assay)*, 440168 (2.5 LS assay)*
Species:	Homo sapiens
Target Gene:	CXCL9
Alternate names:	CMK; MIG; Humig; SCYB9; crg-10
Entrez Gene ID:	4283
Accession#:	NM_002416.2
Unigene:	Hs.77367
Target Sequence:	Homo sapiens chemokine (C-X-C motif) ligand 9 (CXCL9) mRNA
Probe Region:	2 - 1169
ZZ pair number:	20

* Target region is the same across manual and automation

PROBE DATA



RNAScope® Manual Brown Assay performed on FFPE breast cancer tissue under standard condition, using the dapB Negative Control probe (Left; Cat. No. 310043) and Hs-CXCL9 probe (Right; Cat. No. 440161), 40X



RNAScope® Manual Brown Assay performed on FFPE gastric cancer tissue under standard condition, using the dapB Negative Control probe (Left; Cat. No. 310043) and Hs-CXCL9 probe (Right; Cat. No. 440161), 40X

For more information regarding this target gene: <http://www.ncbi.nlm.nih.gov/gene/4283>

Note: ACD always recommends RNA quality verification using control probes, prior to running a target marker.
Expression pattern may vary from data shown here based on tissue preparation methods and/or associated sample biology.