



ADVANCED CELL DIAGNOSTICS

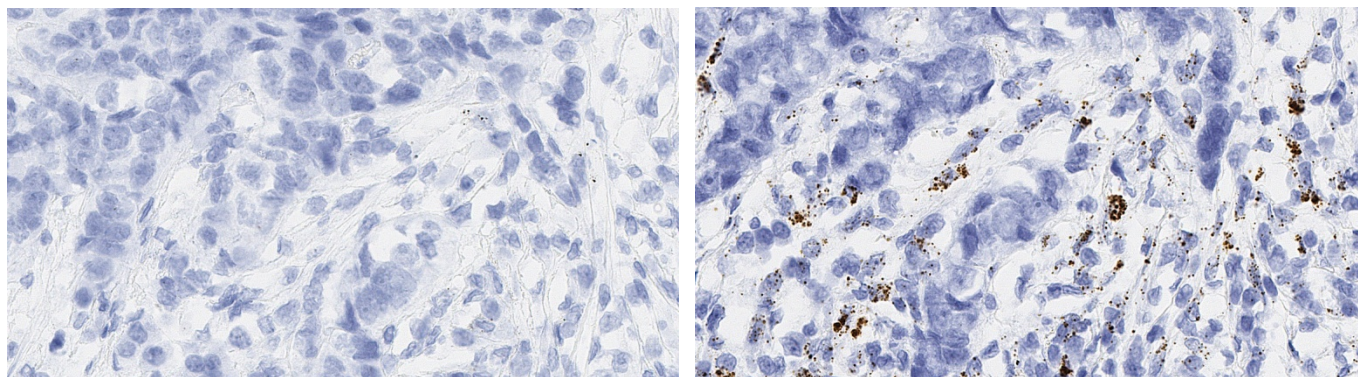
TARGET PROBE: HS-ICAM1

RNASCOPE® PROBE INFORMATION

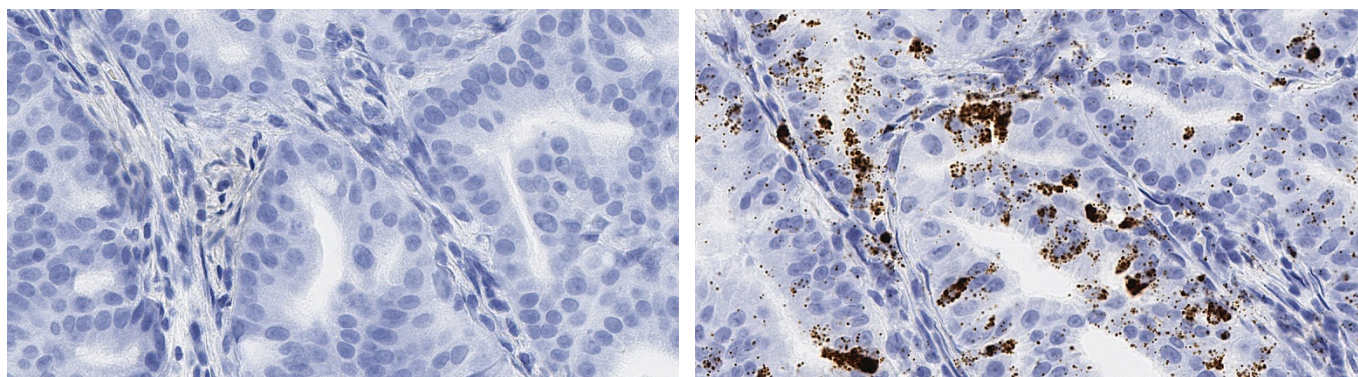
Catalog number:	402951 (Manual)*, 402956 (VS assay)*, 402957 (LS assay)* 402959 (2.5 VS assay)*, 402958 (2.5 LS assay)*
Species:	Homo sapiens
Target Gene:	ICAM1
Alternate names:	BB2; CD54; P3.58
Entrez Gene ID:	3383
Accession#:	NM_000201.2
Unigene:	Hs.643447
Target Sequence:	Homo sapiens intercellular adhesion molecule 1 (ICAM1), mRNA
Probe Region:	1621 - 2698
ZZ pair number:	20

* Target region is the same across manual and automation

PROBE DATA



RNAScope® Manual Brown Assay performed on FFPE lung cancer tissue under standard condition, using the dapB Negative Control probe (Left; Cat. No. 310043) and Hs-ICAM1 probe (Right; Cat. No. 402951), 40X



RNAScope® Manual Brown Assay performed on FFPE gastric cancer tissue under standard condition, using the dapB Negative Control probe (Left; Cat. No. 310043) and Hs-ICAM1 probe (Right; Cat. No. 402951), 40X

For more information regarding this target gene: <http://www.ncbi.nlm.nih.gov/gene/3383>

Note: ACD always recommends RNA quality verification using control probes, prior to running a target marker.
Expression pattern may vary from data shown here based on tissue preparation methods and/or associated sample biology.