



ADVANCED CELL DIAGNOSTICS

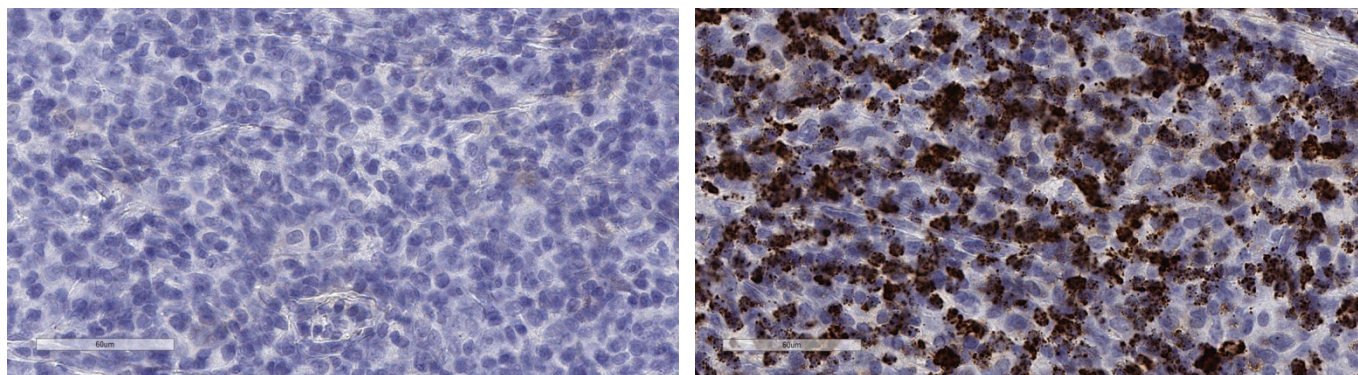
TARGET PROBE: HS-CD3-POOL

RNASCOPE® PROBE INFORMATION

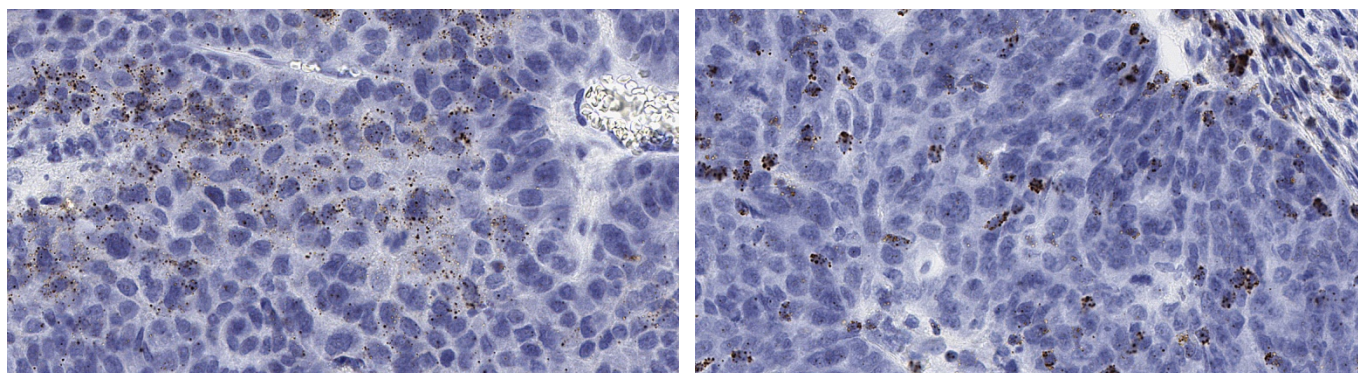
Catalog number:	426621 (Manual)*, 426626 (VS assay)*, 426627 (LS assay)* 426629 (2.5 VS assay)*, 426628 (2.5 LS assay)*
Species:	Homo sapiens
Target Gene:	CD3D, CD3E, CD3G
Alternate names:	N/A
Entrez Gene ID:	N/A
Accession#:	N/A
Unigene:	N/A
Target Sequence:	N/A
Probe Region:	180 – 743 (Hs-CD3D); 26 – 1288 (Hs-CD3E); 40 – 911 (Hs-CD3G)
ZZ pair number:	11 (Hs-CD3D); 20 (Hs-CD3E); 18 (Hs-CD3G)

* Target region is the same across manual and automation

PROBE DATA



RNAScope® Manual Brown Assay performed on FFPE lymphoma tissue under standard condition, using the dapB Negative Control probe (Left; Cat. No. 310043) and Hs-CD3-pool probe (Right; Cat. No. 426621), 40X



RNAScope® Manual Brown Assay performed on FFPE liver cancer (Left) and ovarian cancer (Right) tissue under standard condition, using the Hs-CD3-pool probe (Cat. No. 426621), 40X

Note: ACD always recommends RNA quality verification using control probes, prior to running a target marker.
Expression pattern may vary from data shown here based on tissue preparation methods and/or associated sample biology.