



ADVANCED CELL DIAGNOSTICS

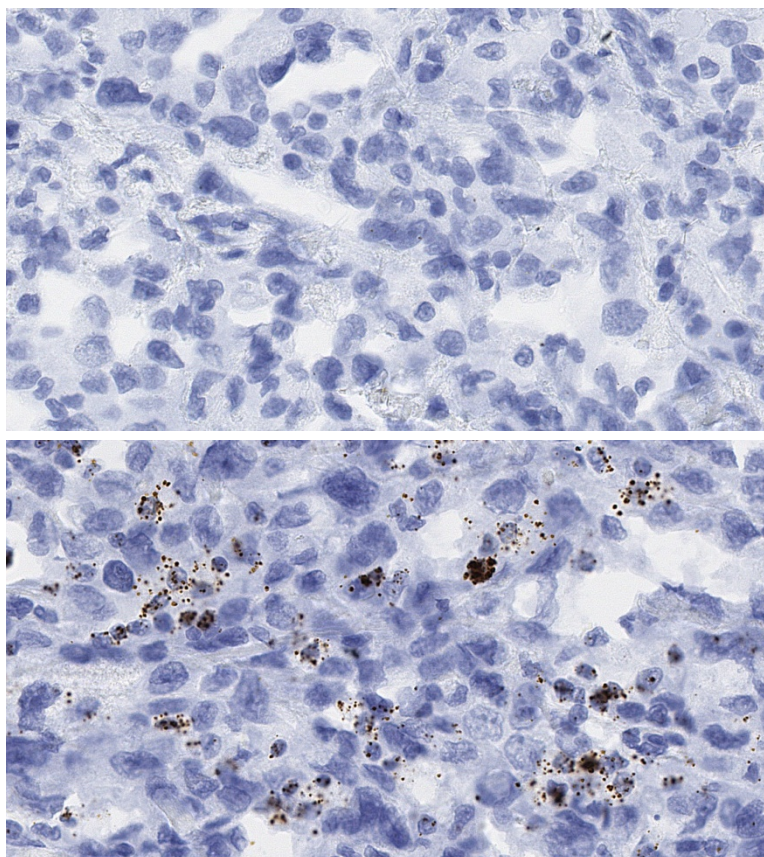
TARGET PROBE: HS-HAVCR2

RNASCOPE® PROBE INFORMATION

Catalog number:	560681 (Manual)*, 560686 (VS assay)*, 560687 (LS assay)* 560689 (2.5 VS assay)*, 560688 (2.5 LS assay)*
Species:	Homo sapiens
Target Gene:	HAVCR2
Alternate names:	TIM3; CD366; KIM-3; TIMD3; Tim-3; TIMD-3; HAVcr-2
Entrez Gene ID:	84868
Accession#:	NM_032782.4
Unigene:	Hs.710500
Target Sequence:	Homo sapiens hepatitis A virus cellular receptor 2 (HAVCR2), mRNA
Probe Region:	437 - 1407
ZZ pair number:	20

* Target region is the same across manual and automation

PROBE DATA



RNAscope® Manual Brown Assay performed on FFPE bladder cancer tissue under standard condition, using the dapB Negative Control probe (Top; Cat. No. 310043) and Hs-HAVCR2 probe (Bottom; Cat. No. 560681), 40X

For more information regarding this target gene: <http://www.ncbi.nlm.nih.gov/gene/84868>

Note: ACD always recommends RNA quality verification using control probes, prior to running a target marker.
Expression pattern may vary from data shown here based on tissue preparation methods and/or associated sample biology.